

Cornell University
Office of the Vice Provost for Research

RESEARCH EXPENDITURES

July 1, 2004 - June 30, 2005

CORNELL UNIVERSITY

RESEARCH EXPENDITURES

JULY 1, 2004 - JUNE 30, 2005

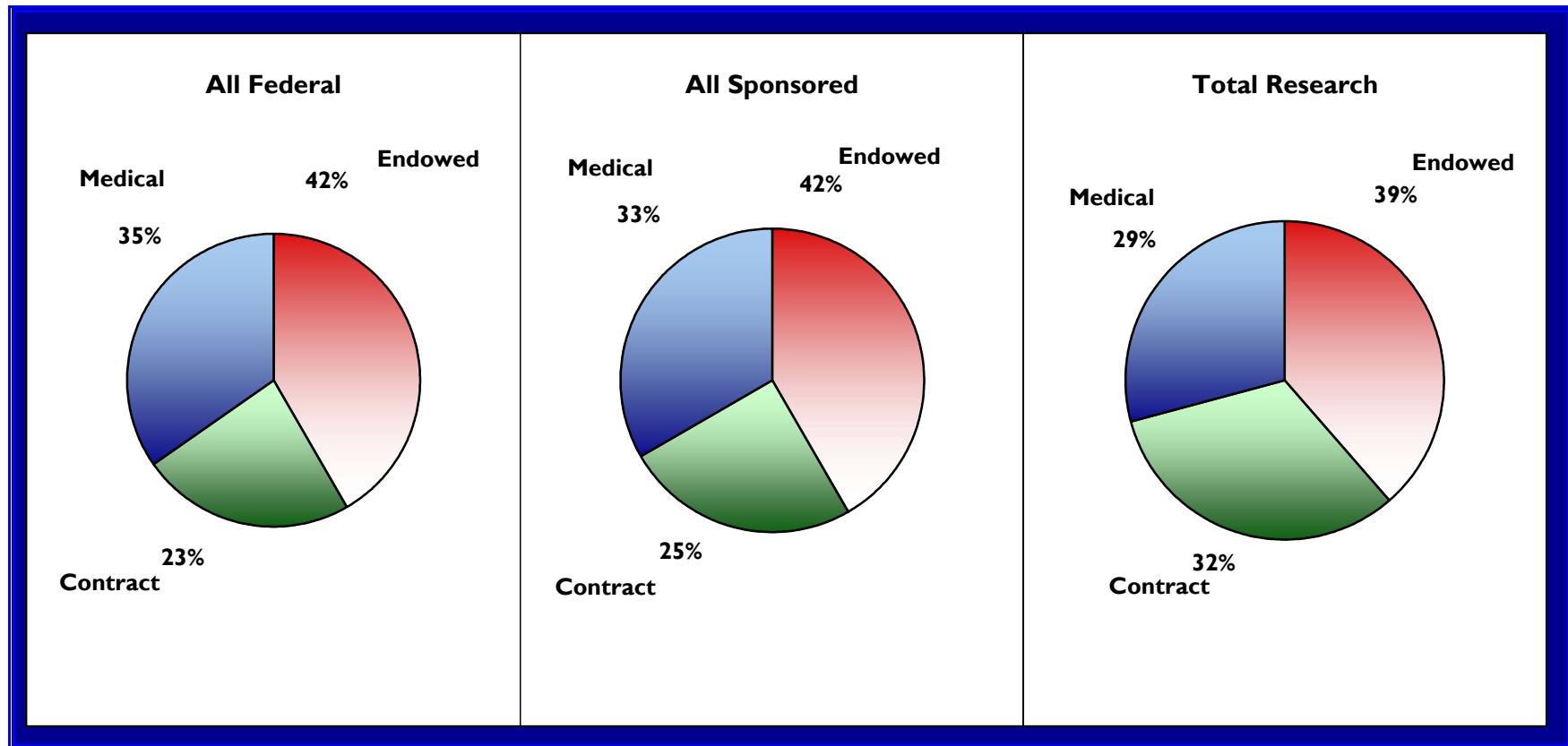
	SPONSORED RESEARCH			BUDGETED RESEARCH				TOTAL RESEARCH	
	Federal Government	Non-Federal	Subtotal Sponsored	Cornell	NY State	Federal Government	Subtotal Budgeted	Total Research	Percent of Total
ENDOWED UNITS (ITH)									
Arts & Sciences	\$64,925,576	\$9,589,294	\$74,514,870	\$5,790,963			\$5,790,963	\$80,305,833	14.3
Engineering	45,196,388	15,958,959	61,155,347	3,686,220			3,686,220	\$64,841,567	11.6
NAIC (Arecibo Observatory)	12,256,847	81,371	12,338,218	753,685			753,685	\$13,091,903	2.3
Cornell Theory Center (CTC)	2,518,029	6,778,489	9,296,519	263,337			263,337	\$9,559,856	1.7
Nanobiotechnology Center (NBTC)	4,697,193	274,138	4,971,331	65,148			65,148	\$5,036,479	0.9
Cornell NanoScale S&T Facility (CNF)	13,418,314	538,521	13,956,836	234,518			234,518	\$14,191,353	2.5
CHESS (Synchrotron)	7,491,786	84,300	7,576,086	299,852			299,852	\$7,875,938	1.4
CCMR (Materials Research Central Facility)	2,675,315	61,400	2,736,715	1,381,702			1,381,702	\$4,118,417	0.7
All Other Colleges and Research Units	6,025,806	2,593,283	8,619,089	350,209			350,209	\$8,969,298	1.6
Graduate Student Tuition Support			0	8,903,619			8,903,619	\$8,903,619	1.6
TOTAL ENDOWED	159,205,255	35,959,755	195,165,010	21,729,253	0	0	21,729,253	\$216,894,263	38.6
CONTRACT COLLEGE UNITS (ITH)									
Agriculture & Life Sciences	51,700,056	18,937,995	70,638,051	16,178,914	23,538,709	4,213,843	43,931,466	\$114,569,517	20.4
Veterinary Medicine	24,985,589	5,643,428	30,629,017	2,513,623	6,186,622	366,602	9,066,846	\$39,695,863	7.1
Human Ecology	2,879,961	2,069,760	4,949,721	2,994,048	2,103,005	301,795	5,398,848	\$10,348,569	1.8
Nutritional Sciences	7,386,405	1,111,924	8,498,329	613,704	611,683	146,740	1,372,127	\$9,870,456	1.8
Industrial & Labor Relations	2,155,597	668,684	2,824,280	2,238,959	581,561		2,820,520	\$5,644,801	1.0
TOTAL CONTRACT	89,107,607	28,431,791	117,539,398	24,539,248	33,021,580	5,028,980	62,589,808	\$180,129,206	32.1
TOTAL ITHACA	248,312,862	64,391,546	312,704,408	46,268,500	33,021,580	5,028,980	84,319,061	\$397,023,469	70.7
MEDICAL COLLEGE (NYC)	132,662,130	23,779,723	156,441,853	7,855,000			7,855,000	\$164,296,853	29.3
TOTAL RESEARCH EXPENDITURES	\$380,974,992	\$88,171,269	\$469,146,261	\$54,123,500	\$33,021,580	\$5,028,980	\$92,174,061	\$561,320,322	100.0
PERCENTAGE OF GRAND TOTAL	67.9	15.7	83.6	9.6	5.9	0.9	16.4	100.0	

Note: This report does not include unrecovered indirect costs

CORNELL UNIVERSITY

RESEARCH EXPENDITURES BY DIVISION

FISCAL YEAR 2005



CORNELL UNIVERSITY
RESEARCH EXPENDITURES
COMPARISON WITH PRIOR YEAR
FISCAL YEARS 2004 & 2005

	FEDERAL SPONSORED		%	TOTAL SPONSORED		%	BUDGETED RESEARCH		%	TOTAL RESEARCH		%
	FY 2004	FY 2005	Change	FY 2004	FY 2005	Change	FY 2004	FY 2005	Change	FY 2004	FY 2005	Change
ENDOWED UNITS	\$155,770,885	\$159,205,255	2.2	\$187,166,003	\$195,165,010	4.3	\$24,491,234	\$21,729,253	-11.3	\$211,657,238	\$216,894,263	2.5
CONTRACT COLLEGE UNITS	75,345,614	89,107,607	18.3	103,611,698	117,539,398	13.4	57,556,595	62,589,808	8.7	161,168,293	180,129,206	11.8
MEDICAL COLLEGE	124,942,728	132,662,130	6.2	150,208,476	156,441,853	4.1	14,691,150	7,855,000	-46.5	164,899,626	164,296,853	-0.4
TOTAL EXPENDITURES	\$356,059,227	\$380,974,992	7.0	\$440,986,177	\$469,146,261	6.4	\$96,738,979	\$92,174,061	-4.7	\$537,725,157	\$561,320,322	4.4

CORNELL UNIVERSITY

SPONSORED RESEARCH EXPENDITURES - FEDERAL AGENCIES

JULY 1, 2004 - JUNE 30, 2005

	DHHS	NSF	Dept of Defense	NASA *	Dept of Agriculture	Dept of Energy	AID	All Others	Total Federal
ENDOWED UNITS (ITH)									
Arts & Sciences	\$15,923,641	\$35,704,645	\$629,665	\$10,487,505	\$59,429	\$1,438,710		\$681,981	\$64,925,576
Engineering	3,735,326	23,086,837	12,610,329	1,949,195	298,919	3,208,392		307,389	\$45,196,388
NAIC		12,033,839		37,764				185,243	\$12,256,847
CTC	48,341	1,743,528	297,901	124,224	285,689			18,346	\$2,518,029
NBTC		4,698,700	11,993	61,858				(75,357)	\$4,697,193
CNF		11,147,186						2,271,128	\$13,418,314
CHESS	2,250,591	5,241,195							\$7,491,786
CCMR (Central Facility)		1,979,725				726,373		(30,783)	\$2,675,315
All Other Colleges and Research Units	486,778	4,650,734			4,022	117,282		766,991	\$6,025,806
TOTAL ENDOWED	22,444,676	100,286,390	13,549,888	12,660,546	648,060	5,490,756	0	4,124,939	\$159,205,255
CONTRACT COLLEGE UNITS (ITH)									
Agriculture & Life Sciences	11,846,817	14,755,242	673,356	443,731	16,508,992	495,849	3,836,403	3,139,667	\$51,700,056
Veterinary Medicine	22,193,930	1,011,643	323,334		1,422,863			33,819	\$24,985,589
Human Ecology	2,063,189	677,674			109,863			29,235	\$2,879,961
Nutritional Sciences	5,191,622		261,469		1,181,223		752,091		\$7,386,405
Industrial & Labor Relations	684,787	139,285			527			1,330,998	\$2,155,597
TOTAL CONTRACT	41,980,345	16,583,844	1,258,159	443,731	19,223,468	495,849	4,588,493	4,533,719	\$89,107,607
TOTAL ITHACA	64,425,021	116,870,234	14,808,047	13,104,277	19,871,527	5,986,604	4,588,493	8,658,658	\$248,312,862
MEDICAL COLLEGE (NYC)	131,264,582		1,397,548						\$132,662,130
TOTAL FEDERAL EXPENDITURES	\$195,689,603	\$116,870,234	\$16,205,595	\$13,104,277	\$19,871,527	\$5,986,604	\$4,588,493	\$8,658,658	\$380,974,992
PERCENTAGE OF GRAND TOTAL	34.9	20.8	2.9	2.3	3.5	1.1	0.8	1.5	67.9

* NASA includes JPL funds under subcontract

CORNELL UNIVERSITY

SPONSORED RESEARCH EXPENDITURES - NON-FEDERAL SOURCES

JULY 1, 2004 - JUNE 30, 2005

	State & Local Governments	Corporations & Trade Assoc.	Foundations	Non-Profit Organizations	All Other Non-Federal	Total Non-Federal
ENDOWED UNITS (ITH)						
Arts & Sciences	\$37,424	\$986,616	\$828,049	\$7,739,001	(\$1,796)	\$9,589,294
Engineering	3,429,914	3,863,990	336,056	7,304,035	1,024,965	\$15,958,959
NAIC		8,965		72,405		\$81,371
CTC	1,088,968	5,284,595		386,033	18,892	\$6,778,489
NBTC	244,163			29,975		\$274,138
CNF	602,551	-64,029				\$538,521
CHESS				84,300		\$84,300
CCMR (Central Facility)				61,400		\$61,400
All Other Colleges and Research Units	955,708	903,462	146,928	566,618	20,567	\$2,593,283
TOTAL ENDOWED	6,358,728	10,983,600	1,311,033	16,243,768	1,062,627	\$35,959,755
CONTRACT COLLEGE UNITS (ITH)						
Agriculture & Life Sciences	5,902,250	1,500,639	1,688,202	9,674,858	172,047	\$18,937,995
Veterinary Medicine	1,328,587	1,233,447	1,045,388	2,024,813	11,193	\$5,643,428
Human Ecology	179,691	361,611	159,964	1,226,177	142,316	\$2,069,760
Nutritional Sciences		219,988	262,481	629,456		\$1,111,924
Industrial & Labor Relations	101,680		468,970	98,034		\$668,684
TOTAL CONTRACT	7,512,209	3,315,685	3,625,004	13,653,337	325,557	\$28,431,791
TOTAL ITHACA	13,870,937	14,299,284	4,936,037	29,897,104	1,388,184	\$64,391,546
MEDICAL COLLEGE (NYC)		8,604,134	10,752,189	1,185,200	3,238,200	\$23,779,723
TOTAL NON-FEDERAL EXPENDITURES	\$13,870,937	\$22,903,418	\$15,688,226	\$31,082,304	\$4,626,384	\$88,171,269
PERCENTAGE OF GRAND TOTAL	2.5	4.1	2.8	5.5	0.8	15.7

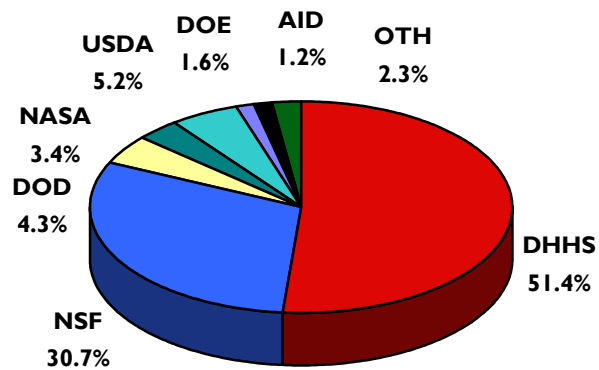
CORNELL UNIVERSITY
SPONSORED RESEARCH EXPENDITURES - FEDERAL AGENCIES
COMPARISON WITH PRIOR YEAR
FISCAL YEARS 2004 & 2005

Federal Agency	FY 2004	Percent Fed Spons	FY 2005	Percent Fed Spons	% Change in Amount
Department of Health & Human Services	\$180,288,123	51.0	195,689,603	51.4	8.5
National Science Foundation	99,857,185	28.2	116,870,234	30.7	17.0
Department of Defense	20,297,864	5.7	16,205,595	4.3	-20.2
Department of Agriculture	18,512,598	5.2	19,871,527	5.2	7.3
NASA	* 16,601,789	4.7	* 13,104,277	3.4	-21.1
Department of Energy	6,921,532	2.0	5,986,604	1.6	-13.5
Agency for Int'l Development	4,163,054	1.2	4,588,493	1.2	10.2
All Others	7,097,523	2.0	8,658,658	2.3	22.0
TOTAL FEDERAL SPONSORED RESEARCH	\$353,739,669	100.0	\$380,974,992	100.0	7.7

* NASA includes JPL funds under subcontract

CORNELL UNIVERSITY
SPONSORED RESEARCH EXPENDITURES
BY FEDERAL AGENCY
FISCAL YEAR 2005

Percent of Federal Sponsored Research



DHHS	Dept. of Health & Human Services
NSF	National Science Foundation
DOD	Dept. of Defense
NASA	National Aeronautics & Space Admin.
USDA	Dept. of Agriculture
DOE	Dept. of Energy
AID	Agency for Int'l Development
OTH	All Others

CORNELL UNIVERSITY

TOTAL RESEARCH EXPENDITURES - BY DISCIPLINE

FISCAL YEARS 2004 & 2005

* Discipline	FY 2004	Percent of Total	FY 2005	Percent of Total	% Change in Amount
Agriculture	\$59,727,240	11.1	\$63,721,682	11.4	6.7
Arts, Humanities & Cultural Studies	813,947	0.2	1,025,838	0.2	26.0
** Biological/Life Sciences	69,733,699	13.0	75,874,008	13.5	8.8
Computer & Information Sciences	24,652,722	4.6	24,935,459	4.4	1.1
Engineering	63,154,846	11.7	68,588,978	12.2	8.6
Environmental Sciences	4,561,439	0.8	5,230,017	0.9	14.7
Mathematical Sciences	3,319,612	0.6	3,558,366	0.6	7.2
Medical Sciences	164,899,626	30.7	164,296,853	29.3	-0.4
Physical Sciences	90,408,549	16.8	88,989,344	15.9	-1.6
Psychology	3,498,524	0.7	4,288,978	0.8	22.6
Social Sciences	21,218,971	3.9	24,084,222	4.3	13.5
Veterinary Medicine	22,278,928	4.1	26,613,364	4.7	19.5
Graduate Student Tuition Support	8,487,254	1.6	8,903,619	1.6	4.9
Research Administration & Support	969,801	0.2	1,209,595	0.2	24.7
TOTAL RESEARCH EXPENDITURES	\$537,725,157	100.0	\$561,320,322	100.0	4.4

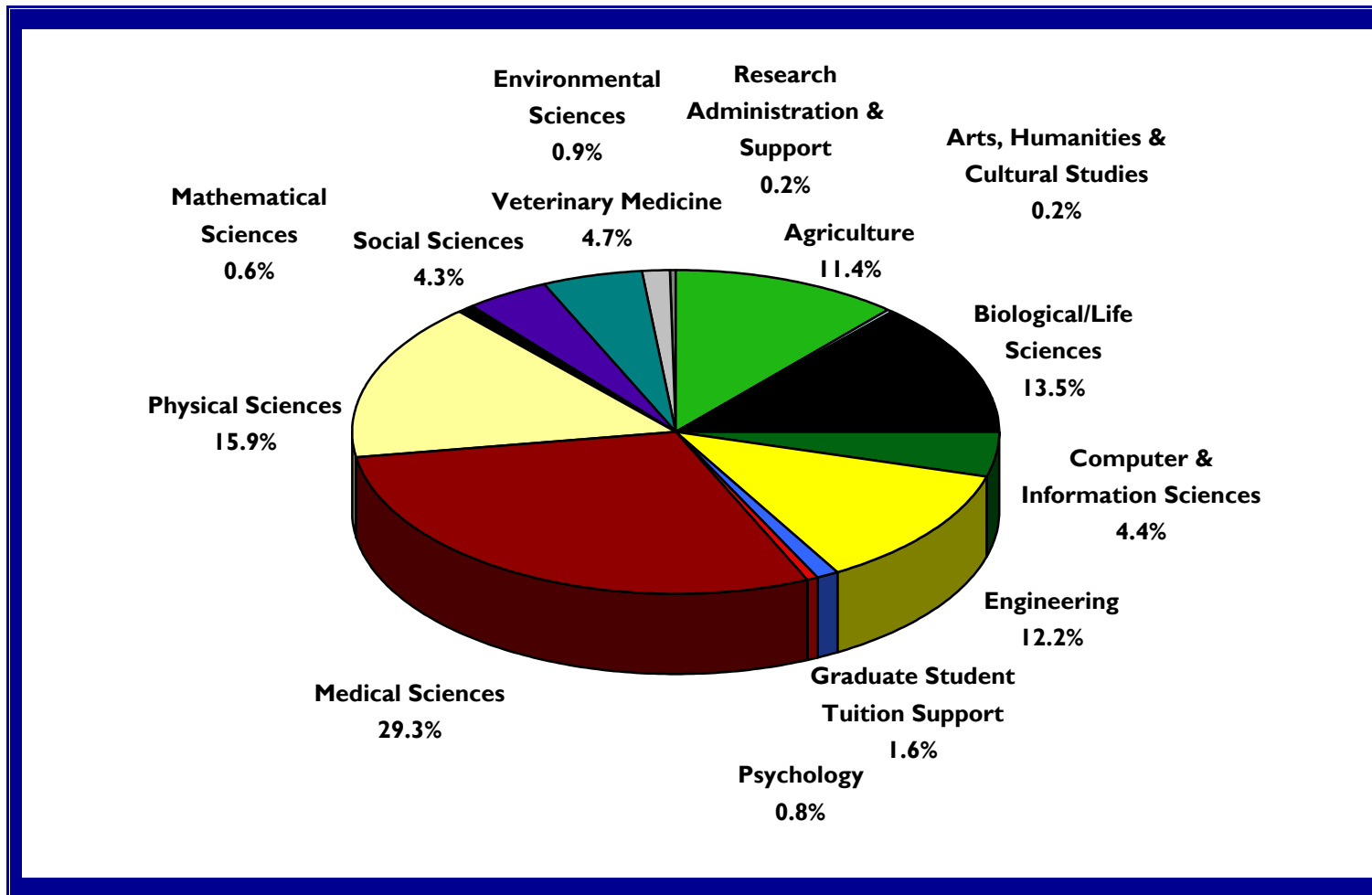
* Disciplines are defined according to guidelines set by the National Science Foundation.

** Includes basic biological sciences in colleges of Arts & Sciences, Agriculture & Life Sciences, Veterinary Medicine and the Division of Nutritional Sciences.

CORNELL UNIVERSITY

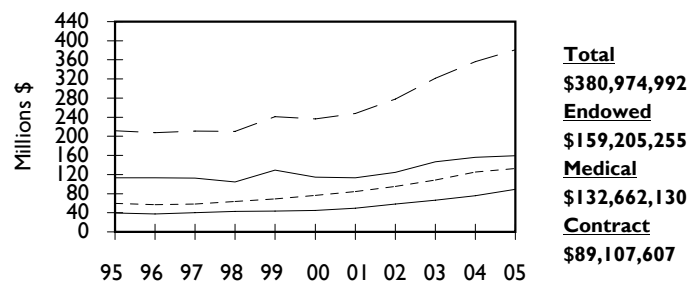
TOTAL RESEARCH EXPENDITURES BY DISCIPLINE

FISCAL YEAR 2005

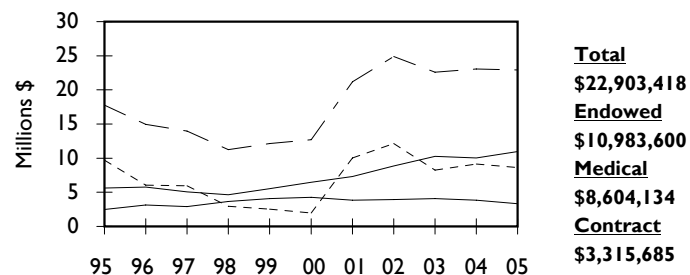


CORNELL UNIVERSITY
TRENDS IN RESEARCH EXPENDITURES
FISCAL YEARS 1996 TO 2005

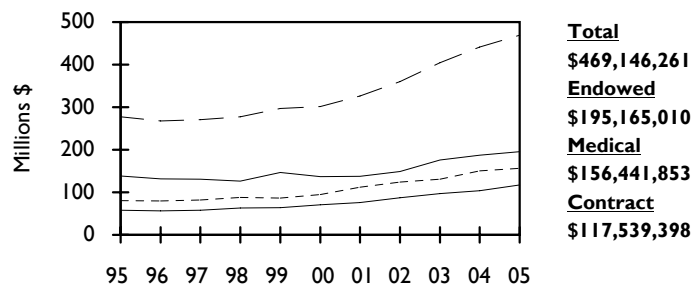
FEDERAL SPONSORED RESEARCH



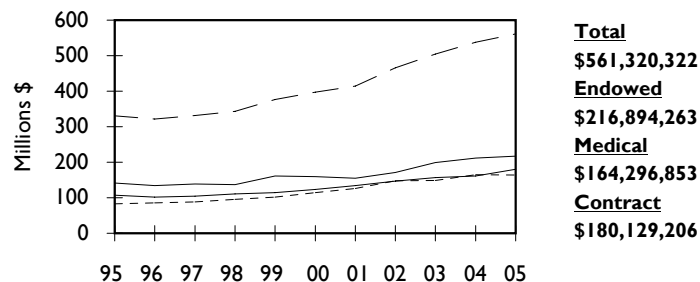
CORPORATE SPONSORED RESEARCH



ALL SPONSORED RESEARCH



TOTAL RESEARCH



All Sponsored Research includes Federal, New York State, Corporate, Foundation, Non-Profit and other sponsored research expenditures.

Total Research includes all Sponsored and all Budgeted expenditures.