

PAPER NO. NA74-110

ASAE NORTH ATLANTIC REGION'S  
FIRST FIFTY YEARS  
1925-1974

by

O. C. French  
Professor Emeritus  
Cornell University  
Ithaca, New York

For presentation at the 1974 Annual Meeting  
NORTH ATLANTIC REGION ASAE

University of West Virginia  
Morgantown, West Virginia  
August 18-20, 1974

**SUMMARY:**

A brief history of the North Atlantic Region ASAE, with a listing of Annual Meeting dates and locations, names of chairmen and secretaries. Includes a few historical photograph reproductions.



**American Society of Agricultural Engineers**

St. Joseph, Michigan 49085

Papers presented before ASAE meetings are considered to be the property of the Society. In general, the Society reserves the right of first publication of such papers, in complete form. However, it has no objection to publication, in condensed form, with credit to the Society and the author. Permission to publish a paper in full may be requested from ASAE, P.O. Box 229, St. Joseph, Michigan 49085. The Society is not responsible for statements or opinion advanced in papers or discussions at its meetings.

ASAE NORTH ATLANTIC REGION'S  
FIRST FIFTY YEARS  
1925-1974

Available records fail to disclose the precise date that the petition for forming the North Atlantic Section was transmitted to the Council of ASAE, but official recognition of its approval is recorded in the May 1925 issue of Agricultural Engineering, which featured the story of the Organization Meeting of the North Atlantic Section held at Cornell University, April 10th and 11th, 1925. A copy of the petition and constitution and bylaws along with current constitution and bylaws are appended herewith. Professor H. W. Riley, Head of the Rural Engineering Department at Cornell, and a Charter Member of ASAE served as temporary chairman of the Organization Meeting. (Of special note, Professor Riley was the sole surviving Charter Member of ASAE at the time of his death on August 19, 1971).

The business meeting to consider organizing a section was not held until near the close of the program session on April 10th. After those attending had listened to some interesting papers concerning problems and challenges in agricultural engineering fields there was unanimous desire to form the Section. Those responsible for calling the meeting anticipated that perhaps 25 would attend. Instead a total of 45 were in attendance. About two-thirds were ASAE members and the remaining one-third gave indication that they would join ASAE. At the banquet on the evening of April 10th, 39 were in attendance. The banquet was held in the Forest Home Inn with Prof. H. W. Riley as toastmaster. This Inn has long since disappeared from the Forest Home Community in Ithaca.

With approval to organize the Section it was agreed that the first annual meeting of the Section would be held in Schenectady, N.Y. in December 1925 with General Electric Co. as host sponsors.

The first officers duly elected for the section were:

Chairman	- R. U. Blasingame, Pennsylvania State College
Vice-Chairman	- C. L. Gunness, Massachusetts Agricultural College
Secretary-Treasurer	- W. C. Harrington, Field Engr., Portland Cement Assoc., Syracuse, N.Y.

Territory of the Section

The Section included the Canadian Provinces of Nova Scotia, New Brunswick, Quebec, Labrador, and Ontario; the States of Maine, New Hampshire, Vermont, Massachusetts, Rhode Island, Connecticut, New York, Pennsylvania, New Jersey, Maryland, West Virginia, Virginia, District of Columbia and Delaware.

As of 1974 the only changes in territory now comprising the Region are the inclusion of Newfoundland and Prince Edward Island; Virginia is now in the Southeast Region.

The designation of the territory as a Section of ASAE continued from 1925 until 1964 at which time it was identified as a Region in the restructuring of ASAE.

Membership in the section numbered approximately 40-50 at the time of its first annual meeting in Schenectady in December 1925. It had 494 members at the time of the 25th Anniversary Meeting at the University of New Hampshire in August 1950. In 1974 the membership totals 865, a 71% increase in 25 years.

NORTH ATLANTIC REGION, ASAE  
MEETING PLACES AND DATES

<u>Year</u>	<u>Place</u>	<u>Date</u>
1925	Cornell University, Ithaca, N.Y.	Apr. 10 & 11
1925	Schenectady, N.Y.	Dec. 10 & 11
1926	Pennsylvania State College, State College, Pa.	Oct. 11 & 12
1927	Pittsburgh, Pa.	Oct. 19-21
1928	Business Meeting only (Annual ASAE Meeting, Washington, D.C.)	June 21
1929	Massachusetts Agricultural College, Amherst, Mass.	Oct. 17-19
1930	Seneca Hotel, Rochester, N.Y.	Oct. 17-19
1931	Woodrow Wilson Hotel, New Brunswick, N.J.	Oct. 15-17
1932	N.Y. Power & Light Corp., Albany, N.Y.	Oct. 27-29
1933	YMCA Hall, Harrisburg, Pennsylvania	Jan. 17-19 (1934)
1934	Massachusetts Agricultural College, Amherst, Mass.	Oct. 17-19
1935	Cornell University, Ithaca, N.Y.	Oct. 7-9
1936	Skytop Lodge, Skytop, Pa.	Oct. 15-17
1937	King Edward Hotel, Toronto, Ont.	Oct. 12-14
1938	Parker House, Boston, Mass.	Sept. 20-22
1939	N.Y.S. Institute of Agr., Farmingdale, L.I., N.Y.	Sept. 12-15
1940	University of Maine, Orono, Me.	Aug. 27-30
1941	State 4-H Camp, Jackson's Mill, W. Va.	Sept. 29-Oct. 1
1942	Belmont Plaza Hotel, New York, N.Y.	Sept. 28 & 29
1943	Belmont Plaza Hotel, New York, N.Y.	Sept. 27 & 28
1944	Commodore Hotel, New York, N.Y.	Sept. 26 & 27
1945	Roosevelt Hotel, New York, N.Y.	Oct. 12-14
1946	Lake Morey Inn, Fairlee, Vermont	Sept. 10-12
1947	No section meeting (Annual ASAE Meeting at Phila., Pa.)	
1948	Ontario Agricultural College, Guelph, Ont.	Sept. 8-10
1949	Pennsylvania State College, State College, Pa.	Sept. 7-9
1950	University of New Hampshire, Durham, N.H.	Aug. 28-30
1951	Chalfonte-Haddon Hall, Atlantic City, N.J.	Aug. 27-29
1952	University of Maine, Orono, Me.	Aug. 25-27
1953	L.I. Agr. & Tech. Institute, Farmingdale, N.Y.	Aug. 31-Sept. 1-2
1954	University of Vermont, Burlington, Vt.	Aug. 24-26
1955	University of Connecticut, Storrs, Conn.	Aug. 22-24
1956	Cornell University, Ithaca, N.Y.	Aug. 28-30
1957	University of Delaware, Newark, Del.	Aug. 27-29
1958	Ontario Agricultural College, Guelph, Canada	Aug. 25-27
1959	University of Maryland, College Park, Md.	Sept. 1-3
1960	University of Massachusetts, Amherst, Mass.	Aug. 21-24
1961	Fredericton, N.B., Canada	Aug. 20-23
1962	West Virginia University, Morgantown, W.Va.	Aug. 19-22
1963	University of Maine, Orono, Me.	Aug. 25-28
1964	Rutgers University, New Brunswick, N.J.	Aug. 23-26



1965	Cornell University, Ithaca, N.Y.	Aug. 22-24
1966	Pennsylvania State University, University Park, Pa.	Aug. 21-23
1967	Laval University, Quebec City, Canada	Aug. 20-22
1968	University of Connecticut, Storrs, Conn.	Aug. 25-27
1969	Macdonald College, McGill University, Quebec, Canada	Aug. 20-22
1970	University of Delaware, Newark, Del.	Aug. 16-18
1971	University of Guelph, Ontario, Canada	Aug. 15-18
1972	University of Maryland, College Park, Md.	Aug. 13-15
1973	University of Maine, Orono, Me.	Aug. 19-21
1974	West Virginia University, Morgantown, W.Va.	Aug. 18-20

SUMMARY OF ANNUAL MEETING LOCATIONS

	<u>Cities</u>	<u>Colleges</u>	<u>Resorts</u>
New York	7	6	
Ontario	1	3	
Quebec		2	
New Brunswick		1	
Pennsylvania	2	2	1
New Jersey	2	1	
Massachusetts		3	
Maine		4	
New Hampshire		1	
Vermont		1	1
West Virginia		2	1
District of Columbia	1		
Connecticut		2	
Delaware		2	
Maryland		2	
Total = 49	14	32	3

Note: 1947 no section meeting held

The only areas of the region in which annual meetings have not been held are Labrador, Nova Scotia, Prince Edward Island, and the District of Columbia.



NORTH ATLANTIC REGION CHAIRMEN  
1925-1974

1925	R. U. Blasingame, Pennsylvania State University, State College, Pa.
1926	R. T. Wagner, General Electric Co., Schenectady, N.Y.
1927	C. I. Gunness, Massachusetts Agricultural College, Amherst, Mass.
1928	W. C. Harrington, Portland Cement Assoc., Syracuse, N.Y.
1929	W. C. Harrington, Portland Cement Assoc., Syracuse, N.Y.
1930	R. W. Carpenter, University of Maryland, College Park, Md.
1931	L. S. Caple, Rochester Gas & Electric Co., Rochester, N.Y.
1932	B. B. Robb, Cornell University, Ithaca, N.Y.
1933	J. R. Haswell, Pennsylvania State College, State College, Pa.
1934	D. E. Blandy, N.Y. Power & Light, Albany, N.Y.
1935	F. L. Fairbanks, Cornell University, Ithaca, N.Y.
1936	G. A. Rietz, General Electric Co., Schenectady, N.Y.
1937	W. C. Krueger, Rutgers University, New Brunswick, N.J.
1938	H. W. Riley, Cornell University, Ithaca, N.Y.
1939	J. S. Webb, Philadelphia Power & Light Co., Coatsville, Pa.
1940	W. T. Ackerman, University of New Hampshire, Durham, N.H.
1941	F. H. Hamlin, Papec Co., Shortsville, N.Y.
1942	A. V. Krewatch, University of Maryland, College Park, Md.
1943	A. A. Stone, Long Island Agr. & Tech. Institute, Farmingdale, N.Y.
1944	R. G. Harvey, Central N.Y. Power Co., Syracuse, N.Y.
1945	A. W. Clyde, Pennsylvania State College, State College, Pa.
1946	F. M. Wigsten, Central Hudson Gas and Electric, Poughkeepsie, N.Y.
1947	H. E. Beasley, Rutgers University, New Brunswick, N.J.
1948	H. E. Beasley, Rutgers University, New Brunswick, N.J.
1949	R. J. Bugbee, Central Vermont Public Service Corp., Rutland, Vt.
1950	L. G. Heimpel, Macdonald College, Ste. Anne de Bellevue, Quebec
1951	A. H. Hemker, General Electric Co., Schenectady, N.Y.
1952	A. D. Longhouse, West Virginia University, Morgantown, W.Va.
1953	W. J. Ridout, Jr., Electricity on the Farm, N.Y., N.Y.
1954	C. G. E. Downing, Ontario Agricultural College, Guelph, Ont.
1955	M. H. Lloyd, Niagara Mohawk Power Corp., Buffalo, N.Y.
1956	M. S. Klinck, University of Connecticut, Storrs, Conn.
1957	H. N. Stapleton, Shelburne Farms, Burlington, Vt.
1958	F. W. Peikert, Pennsylvania State University, University Park, Pa.
1959	F. L. Rimback, New England Electric System, Clinton, Mass.
1960	O. C. French, Cornell University, Ithaca, N.Y.
1961	N. T. Brenner, Gulf Oil Co., Pittsburgh, Pa.
1962	W. C. Wheeler, University of Connecticut, Storrs, Conn.
1963	A. G. Fox, New England Electric System, Clinton, Mass.
1964	F. H. Theakston, University of Guelph, Guelph, Ont., Canada
1965	H. J. Hansen, Electricity on the Farm, New York, N.Y.
1966	M. E. Singley, Rutgers University, New Brunswick, N.J.
1967	J. A. Roberts, Dept. of Agriculture, New Brunswick, Canada
1968	J. B. Stere, New Holland Machine Co., New Holland, Pa.
1969	E. S. Shepardson, Cornell University, Ithaca, N.Y.
1970	H. W. Kitching, Toronto, Canada, Terramec Services, Inc., Ltd.
1971	J. Bornstein, U.S.D.A., Burlington, Vt.
1972	L. F. Whitney, University of Massachusetts, Amherst, Mass.
1973	D. P. Brown, Niagara Mohawk Power Corp., Watertown, N.Y.
1974	J. Pos, University of Guelph, Guelph, Canada

NORTH ATLANTIC REGION SECRETARY-TREASURER  
1925-1974

1925	W. C. Harrington, Portland Cement Assoc., Syracuse, N.Y.
1926	W. C. Harrington, Portland Cement Assoc., Syracuse, N.Y.
1927	W. C. Harrington, Portland Cement Assoc., Syracuse, N.Y.
1928	O. B. Stichter, Louden Machine Co., Albany, N.Y.
1929	O. B. Stichter, Louden Machine Co., Albany, N.Y.
1930	O. B. Stichter, Louden Machine Co., Albany, N.Y.
1931	O. B. Stichter, Louden Machine Co., Albany, N.Y.
1932	G. A. Rietz, General Electric Co., Schenectady, N.Y.
1933	G. A. Rietz, General Electric Co., Schenectady, N.Y.
1934	G. A. Rietz, General Electric Co., Schenectady, N.Y.
1935	G. A. Rietz, General Electric Co., Schenectady, N.Y.
1936	F. H. Hamlin, Papec Machine Co., Shortsville, N.Y.
1937	F. H. Hamlin, Papec Machine Co., Shortsville, N.Y.
1938	F. H. Hamlin, Papec Machine Co., Shortsville, N.Y.
1939	H. N. Stapleton, Green Mountain Power Co., Burlington, Vt.
1940	H. N. Stapleton, Green Mountain Power Co., Burlington, Vt.
1941	H. N. Stapleton, Green Mountain Power Co., Burlington, Vt.
1942	H. N. Stapleton - until April 1942 (called into Military Service)
1942	R. J. Bugbee from April 1942, Central Vermont Public Service, Rutland, Vt.
1943	R. J. Bugbee, Central Vermont Public Service, Rutland, Vt.
1944	R. J. Bugbee, Central Vermont Public Service, Rutland, Vt.
1945	G. L. Monroe, Narragansett Electric Co., Providence, R.I.
1946	K. H. Gorham, Electricity on the Farm, New York, N.Y.
1947	K. H. Gorham, Electricity on the Farm, New York, N.Y.
1948	K. H. Gorham, Electricity on the Farm, New York, N.Y.
1949	K. H. Gorham, Electricity on the Farm, New York, N.Y.
1950	M. H. Lloyd, Niagara-Mohawk Power Corp., Buffalo, N.Y.
1951	M. H. Lloyd, Niagara-Mohawk Power Corp., Buffalo, N.Y.
1952	M. H. Lloyd, Niagara-Mohawk Power Corp., Buffalo, N.Y.
1953	M. H. Lloyd, Niagara-Mohawk Power Corp., Buffalo, N.Y.
1954	C. N. Turner, Cornell University, Ithaca, N.Y.
1955	C. N. Turner, Cornell University, Ithaca, N.Y.
1956	C. N. Turner, Cornell University, Ithaca, N.Y.
1957	C. N. Turner, Cornell University, Ithaca, N.Y.
1958	A. G. Fox, New England System, Clinton, Mass.
1959	R. W. Kleis, University of Massachusetts, Amherst, Mass.
1960	R. W. Kleis, University of Massachusetts, Amherst, Mass.
1961	H. E. Gulvin, Eastern States Coop., Springfield, Mass.
1962	H. E. Gulvin, Eastern States Coop., Springfield, Mass.
1963	J. Bornstein, USDA, Burlington, Vt.
1964	J. Bornstein, USDA, Burlington, Vt.
1965	D. P. Brown, Niagara-Mohawk Power Corp., Syracuse, N.Y.
1966	D. P. Brown, Niagara-Mohawk Power Corp., Syracuse, N.Y.
1967	L. F. Whitney, University of Massachusetts, Amherst, Mass.
1968	L. F. Whitney, University of Massachusetts, Amherst, Mass.
1969	L. F. Whitney, University of Massachusetts, Amherst, Mass.
1970	D. T. Black, USDA, Beltsville, Md.
1971	D. T. Black, USDA, Beltsville, Md.
1972	R. O. Martin, Agway, Inc. Syracuse, N.Y.
1973	W. W. Irish, Cornell University, Ithaca, N.Y.
1974	W. W. Irish, Cornell University, Ithaca, N.Y.

NORTH ATLANTIC REGION MEMBERS  
HAVING SERVED AS ASAE PRESIDENTS

1908-1974

<u>Name</u>	<u>Year</u>
Howard W. Riley, Cornell University	1912
Samuel H. McCrory, U.S.D.A.	1923-24
Robert W. Trullinger, U.S.D.A.	1930-31
Lawrence F. Livingston, E. I. duPont deNemours Co.	1935-36
Ralph U. Blasingame, Pennsylvania State College	1936-37
Samuel P. Lyle, U.S.D.A.	1938-39
George W. Kable, Electricity on the Farm	1941-42
Arthur W. Turner, U.S.D.A.	1943-44
George A. Rietz, General Electric Co.	1947-48
Eugene G. McKibben, U.S.D.A.	1958-59
Lawrence H. Skromme, New Holland Machine Co.	1959-60
Byron T. Virtue, Torrington Bearing Co.	1961-62
Orval C. French, Cornell University	1966-67
Talcott W. Edminster, U.S.D.A.	1968-69
Hugh J. Hansen, Electricity on the Farm	1971-72

22.4% of all ASAE Presidents have been North Atlantic Region Members.

ANNUAL ASAE MEETINGS  
IN  
NORTH ATLANTIC REGION

<u>Date</u>	<u>Place</u>
June 1940	Pennsylvania State College
June 1947	Philadelphia
June 1950	Washington
June 1953	Pittsburgh
June 1959	Cornell University
June 1962	Washington
June 1966	University of Massachusetts

State College, Pa.  
Pennsylvania  
D.C.  
Pennsylvania  
Ithaca, N.Y.  
D.C.  
Amherst, Mass.



### Regional Finances

The original constitution as well as the current constitution specified that no annual dues would be levied on members. It did provide that an assessment could be made but not to exceed \$2.00 per member in any one year. An examination of available records fail to disclose that no more than one voluntary assessment was ever sought from members and this produced minimal response. Funds to carry out the activities of the section were obtained from registration fees at annual meetings. By virtue of thrifty management by section officers and by annual host institution committees a sizable balance of funds gradually accumulated. In 1954 a recommendation for establishing student paper awards was adopted and the first awards were made at the 1955 annual meeting. The award consisted of \$100 for the winning paper and \$50 for the second place winner. The policy for student paper awards has been continued since 1955 with modification of the cash prizes.

In 1973 an additional student paper award was established for agricultural mechanics students. The North Atlantic Region was the first Region to establish such a category for paper awards.

Since the early 1960's, a good many universities have established conference staffs that handle many arrangements and details for meetings on their campus' and proceeds that accrue above expenses revert to the institution and not to the organization meeting there. As a result the Region's financial problem became serious and numerous proposals were considered but never were adopted. In 1970 a policy recommended by the ASAE Regional Council, was adopted by ASAE, which refunded new regional member application fees and also readmission fees to the Region. This policy provides an incentive for recruiting new members as well as a source of funds for the Region.

### The North Atlantic Region Banner

In 1971, a cash award of \$25.00 was offered to a Student Branch that offered the best design for a new Regional Banner. The winning Branch was West Virginia University. A new banner was produced in 1972 that incorporated the West Virginia Student Branch design.

### Chronology of Gavels

The passing of an official gavel from the current North Atlantic ASAE Region Chairman to the incoming Chairman is a traditional ceremony, but not with just an ordinary gavel.

The section's first gavel was created by John R. (Jack) Haswell of Pennsylvania State College in 1925, from old Maryland Walnut with a graceful handle and a silver ring around the mallet body. Each annual meeting place and date was engraved on the silver ring. It was appropriate that the first section chairman was Ralph U. Blasingame of Pennsylvania State College, who handed this first section gavel to R. T. Wagner of General Electric Co., at the first annual meeting of the section at Schenectady in December 1925. In time the annual engravings covered the silver ring and in respect for its creator the gavel was officially bequeathed to the Agricultural Engineering Department at Pennsylvania State to be permanently housed in their display case. This action was taken at the annual meeting in September 1949 at Penn State College.

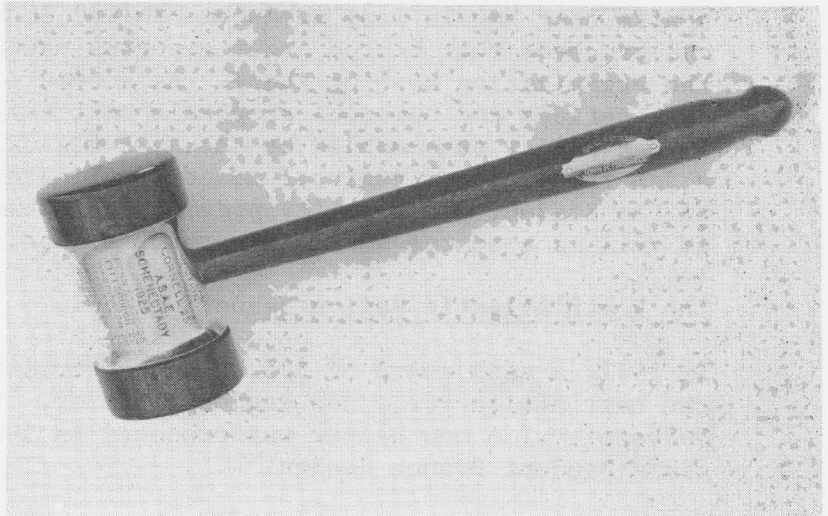
To maintain the custom established by Jack Haswell, his successor and co-worker, Charles G. Burress at Penn State had a new gavel made which was presented to the section Chairman, L. G. Heimpel, who closed the 1949 meeting with a resounding rap of the new gavel.

The history of the "Haswell gavel" was printed in the 25th Anniversary banquet program at the University of New Hampshire in August 1950.

As with the "Haswell gavel", space no longer was available for additional engraving on the "Burress" gavel in 1973. To solve this problem, Chairman Donald P. Brown of Niagara Mohawk Corp., Watertown, N.Y., made a replacement gavel fashioned out of wild cherry wood which he retrieved from a piece of firewood at an Adirondack hunting lodge. It is fitted with a brass ring made by the Niagara-Mohawk Machine Shop in Watertown, N.Y. having the traditional annual meeting dates and locations engraved thereon.

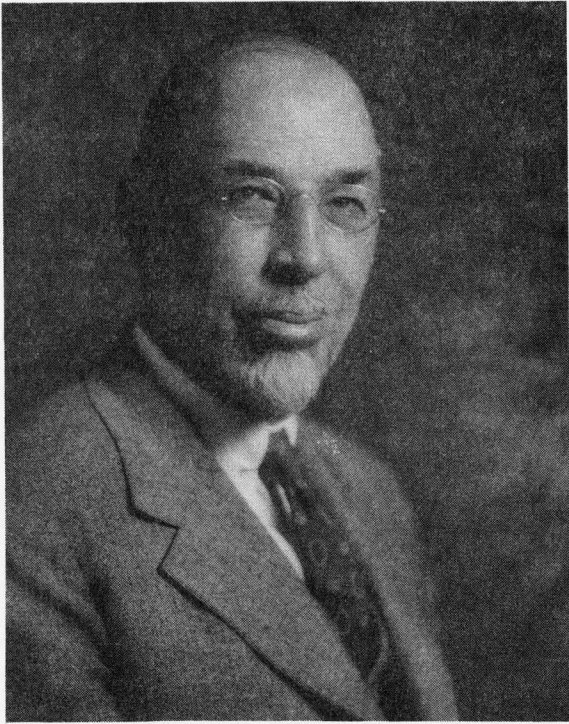
To continue a tradition it is the recommendation of the writer that the "Burress" gavel be bequeathed to the Agricultural Engineering Department at Cornell for permanent display in Riley-Robb Hall, where it can be observed at the 51st. annual meeting of the Region in August 1975 at Cornell University.

The first section gavel made by J. R. (Jack) Haswell, Pennsylvania State College. This gavel served the Section for the years 1925 through 1949.

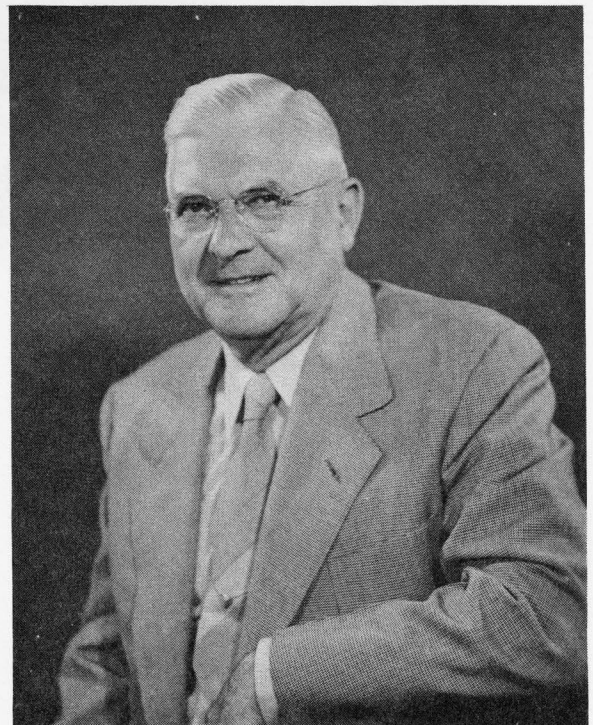


#### An Apology and an Appeal

This brief and sketchy record of North Atlantic Regional ASAE history was gleaned from several sources with some difficulty but admittedly without intensive research. Fortunately our Headquarters Office provided a bound set of minutes from 1925-1950 along with the photos that have been included. Bound volumes of Agricultural Engineering in the Cornell Agricultural Engineering Department provided some information. Unfortunately the minutes and treasurers reports for the years 1951-1973 are not assembled in one folder, in fact many of them are not in the possession of our present secretary, W. W. Irish. It is hoped that these records have not been lost. If any former secretary or Chairman should have any minutes dating from 1951 to the present kindly forward them to the author who will attempt to compile the complete set.



Prof. Howard W. Riley, Charter  
Member ASAE, Cornell University.  
Temporary Chairman of the Sec-  
tion organization meeting 1925.



Prof. Ralph U. Blasingame,  
Pennsylvania State College.  
First Chairman of North At-  
lantic Section 1925.







Attendees at the First Annual Meeting of the North Atlantic Section ASAE, Schenectady, New York, December 10-11, 1925.



First Annual Banquet of North Atlantic Section ASAE, Schenectady, New York, December 1925.

PETITION TO THE COUNCIL OF THE  
AMERICAN SOCIETY OF AGRICULTURAL ENGINEERS  
FOR THE FORMATION OF A NORTH ATLANTIC  
SECTION OF THE SOCIETY

\* \* \* \* \*

The undersigned members most respectfully petition for authority to organize a North Atlantic Section of the American Society of Agricultural Engineers.

The reason for the section is to advance agricultural engineering knowledge and practice in the northeast and further the welfare of the American Society of Agricultural Engineers.

Respectfully submitted,

S. H. McCrory  
H. L. Barrows  
Lewis A. Jones  
C. D. Kinsman  
M. A. R. Kelley  
F.E. Staebner  
M. C. Betts  
R. W. Trullinger  
Ray W. Carpenter  
Chas. E. Seitz  
E. R. Gross  
D. B. Lucas

C. I. Gunness  
J. L. Strahan  
F. W. Knipe  
H. W. Riley  
L. G. Heimpel  
F. G. North  
R. U. Blasingame  
G. M. Foulkrod  
R. Grant Lantz  
F. L. Fairbanks  
W. B. Clarkson



1925 CONSTITUTION AND BY-LAWS  
of the  
NORTH ATLANTIC SECTION  
of the  
AMERICAN SOCIETY OF AGRICULTURAL ENGINEERS

\*\*\*\*\*

CONSTITUTION

Name

1. The name of this Section shall be the North Atlantic Section of the American Society of Agricultural Engineers.
2. It shall be the object of this Section to advance Agricultural Engineering knowledge and practice in the Northeast; to maintain a high professional standing among the members; to further the general welfare of the American Society of Agricultural Engineers; and to bring the members together at occasional meetings for the presentation and discussion of papers relating to agricultural engineering, as well as for social intercourse.

Government

3. This Section shall be governed by this Constitution and By-Laws together with Article B-32 of the By-Laws of the American Society of Agricultural Engineers.

Membership

4. Membership in this Section shall be restricted to persons who are members in good standing of any grade of the Society resident in the territory of this Section, membership in the Section being the same grade as that held in the American Society of Agricultural Engineers. All such may become members of this Section without the payment of an admission fee.

Dues

5. There shall be no regular annual Section dues. Special assessments for specific purposes may be levied by the executive committee on the membership of the Section. These assessments shall not total more than \$2.00 per year.

Officers

6. (a) The officers of the Section shall be a chairman, a vice-chairman, and a secretary-treasurer, who with the chairman who last held office shall constitute the executive committee. The president and secretary of the Society shall be ex-officio members of the executive committee.

(b) A member who has served as chairman for one year shall not be eligible to immediate re-election to the same office.

(c) The term of each officer shall begin at the close of the annual meeting at which such officer is elected.

#### Meetings

7. Meetings of the Section shall be held at times and places designated by the executive committee. At least one meeting to be known as the annual meeting shall be held each year.

#### Amendments

8. Proposed amendments to the Constitution and By-Laws previously approved by a two-thirds vote of the Council of the A.S.A.E. and by a majority of the executive committee of this Section shall be submitted to the acting members of this Section for a letter ballot.

BY-LAWS

Fiscal Year

- SB 1. The fiscal year of the Society shall be from March 1 to last day of February.

Committees

- SB 2. (a) The Executive Committee shall take charge of the affairs of the Section, such as designating the time and place of meetings, arrangements of program, membership, fixing the amounts of assessments, etc. It shall have power to create special committees for the handling of the various activities of the Section.
- (b) The Section shall elect annually a Nominating Committee of three members, not members of the Executive Committee, who shall nominate one or more candidates for the executive offices of the Section and for the succeeding Nominating Committee.

Quorum

- SB 3. A quorum of the Section shall consist of ten members of the Section.

Territory of Section

- SB 4. The territory of this section includes Nova Scotia, New Brunswick, Labrador, Quebec, Ontario, Maine, New Hampshire, Vermont, Massachusetts, Rhode Island, Connecticut, New York, Pennsylvania, New Jersey, Maryland, West Virginia, Virginia, District of Columbia, and Delaware.



CONSTITUTION AND BY-LAWS  
of the  
NORTH ATLANTIC REGION  
of the  
AMERICAN SOCIETY OF AGRICULTURAL ENGINEERS

Revised October 1965

CONSTITUTION

Name

- SC 1. The name of this Region shall be the North Atlantic Region of the American Society of Agricultural Engineers.
- SC 2. It shall be the object of this Region to advance agricultural engineering knowledge and practice in the Northeast; to maintain a high professional standing among the members; to further the general welfare of the American Society of Agricultural Engineers; to bring the members together at occasional meetings for the presentation and discussion of papers relating to agricultural engineering; and to increase and extend the association of agricultural engineers among themselves and with allied scientists and technologists.

Government

- SC 3. This Region shall be governed by this Constitution and By-Laws, together with Article B-11 of the By-Laws and Article R-11 of the Rules of the American Society of Agricultural Engineers.

Membership

- SC 4. Membership in this Region shall be restricted to persons who are members in good standing of any grade of the Society resident in the territory of this Region, membership in the Region being the same grade as that held in the American Society of Agricultural Engineers. All such may become members of this Region without the payment of an admission fee.

Dues

- SC 5. There shall be no regular annual Region dues. Special assessments for specific purposes may be levied by the executive committee on the membership of the Region. These assessments shall not total more than \$2.00 per year.

Officers

- SC 6. (a) The officers of the Region shall be a chairman, a chairman-elect, a 1st vice-chairman, a 2nd vice-chairman, and a secretary-treasurer. The executive committee shall consist of the above officers and the immediate past chairman. The president and secretary of the Society shall be ex-officio members of the executive committee.
- (b) A member who has served as chairman for one year shall not be eligible to immediate re-election to the same office.
- (c) The term of each officer shall begin at the close of the annual meeting at which such officer is elected.
- (d) The executive committee shall be empowered to elect replacements to fill out unexpired terms of executive committee members.

Meetings

- SC 7. Meetings of the Region shall be held at times and places designated by the executive committee. At least one meeting to be known as the annual meeting shall be held each year.

Amendments

- SC 8. Proposed amendments to this Constitution and By-Laws shall be submitted in writing to the executive committee of the Region. If approved by the majority of the executive committee, they shall be submitted to the membership for action by letter ballot.

BY-LAWS

Fiscal Year

SB 1. The fiscal year of the Region shall be from August 1 to July 31.

Committees

- SB 2. (a) The executive committee shall take charge of the affairs of the Region, such as designating the time and place of meetings, arrangements of program, membership, fixing the amounts of assessments, etc. It shall have power to create special committees for the handling of the various activities of the Region.
- (b) The Region shall elect annually a nominating committee of three members not members of the executive committee, who shall nominate, one or more candidates for the executive offices of the Region and for the succeeding nominating committee.

Quorum

SB 3. A quorum of the Region shall consist of ten members of the Region.

Territory of Region

SB 4. The territory of this Region includes Nova Scotia, New Brunswick, Prince Edward Island, Newfoundland, Labrador, Quebec, Ontario, Maine, New Hampshire, Vermont, Massachusetts, Rhode Island, Connecticut, New York, New Jersey, Pennsylvania, Maryland, Delaware, West Virginia, and the District of Columbia; provided that members of the Society residing in that part of Virginia included in the suburbs of the District of Columbia may become members of this Region and provided further that members in the Province of Ontario residing in areas contiguous to Michigan and Minnesota may become members of Regions operating in those areas rather than the North Atlantic Region, if they so elect.